

Daily Report 2

Date: 24th of February

Topics of the day

1. **Hydrological analysis** (Kriging method)

The problem of yesterday has been solved. We were able to run the kriging method. The resulting hydrograph will be compared with the hydrograph found in other hydrological methods.

2. **Mike SHE** :

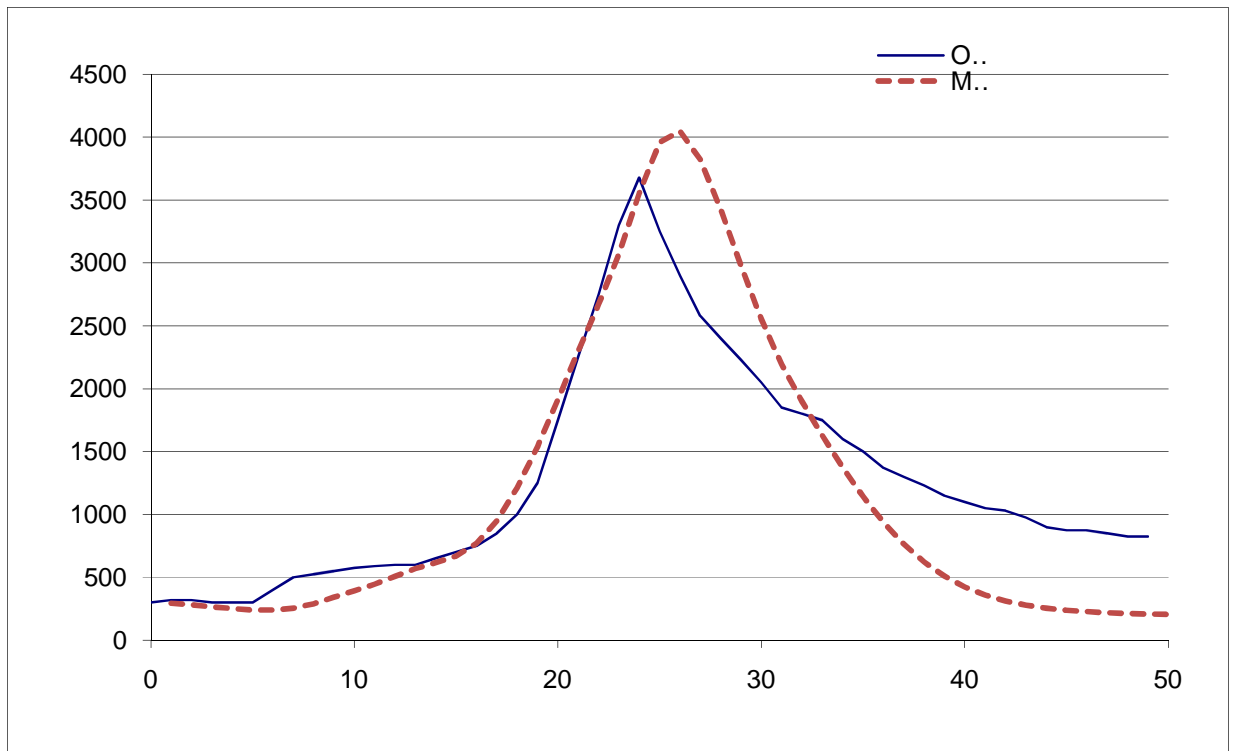
We tried to introduce groundwater flow into the MikeSHE-model.
The reporting on our MikeSHE-work started.

3. **ISIS**:

The ISIS-model was adapted. We will insert the different hydrographs and compare the results.

4. **Mike 11** :

We compared the hydrograph at Napoleon bridge between the Mike 11 model and the measurements (see figure below).



The difference in the result can be explained by the absence of a flood plane in our model, causing a higher discharge in the results.

5. **Special topic :**

We had some interesting interaction with prof. Gorubesville, prof. Bauwens and prof. Peters on our special assignment. The information they gave was used to adapt the presentation. By now, the presentation on our special topic is finished, and will be sent to all team-members. Tomorrow-morning we will have a final discussion on the content of the presentation.